

Basics of Computer B.Sc.(H.Sc.)

Semester -1

Basic Computer Skills -I B.Sc.(FD)

Definition of Computer

- A device that computes, especially a programmable electronic machine that performs high-speed mathematical or logical operations or that assembles, stores, correlates, or otherwise processes information.



What is Computer

- An electronic device that stores, retrieves and processes data, can be programmed with instructions.
- A computer is composed of hardware & software, and can exist in a variety of sizes & configurations.
- Computer is an electronic device which is used to process data.

What is Computer

- The word computer comes from the word “compute”, which means, “to calculate”
- Thereby, a computer is an electronic device that can perform arithmetic operations at high speed
- A computer is also called a *data processor* because it can store, process, and retrieve data whenever desired

Types of Computer

- Desk top

computer



computer



Hand Held
Computer



Lap Top
computer

CLASSIFICATION OF COMPUTER

Generation

- First
- Second
- Third
- Forth
- Fifth

Size

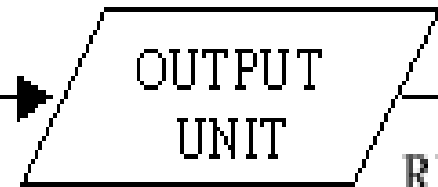
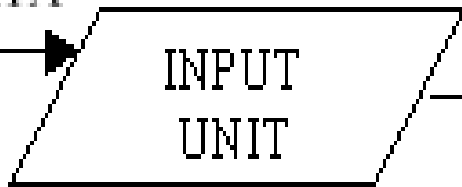
- Super Computer
- Mini Computer
- Mainframe Computer
- Micro Computer

Data Processing Techniques

- Analog Computer
- Digital Computer
- Hybrid Computer

BASIC ORGANIZATION OF COMPUTER

PROGRAM
& DATA



RESULTS



CENTRAL
PROCESSING
UNIT

The Central Processing Unit is the central component, indicated by a bracket on the right side of the diagram, encompassing the Control Unit and the Arithmetic Logic Unit.

COMPUTERS HAVE TWO MAIN PARTS

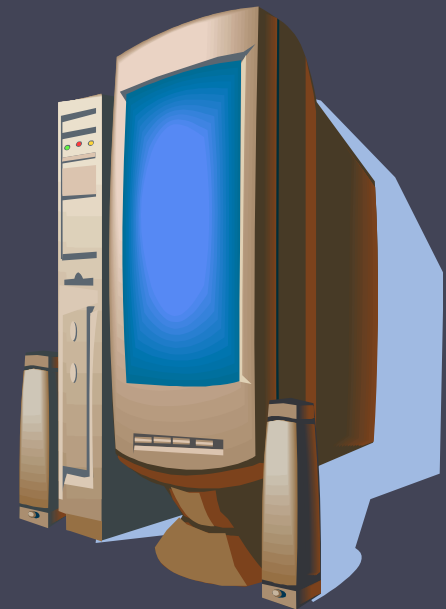
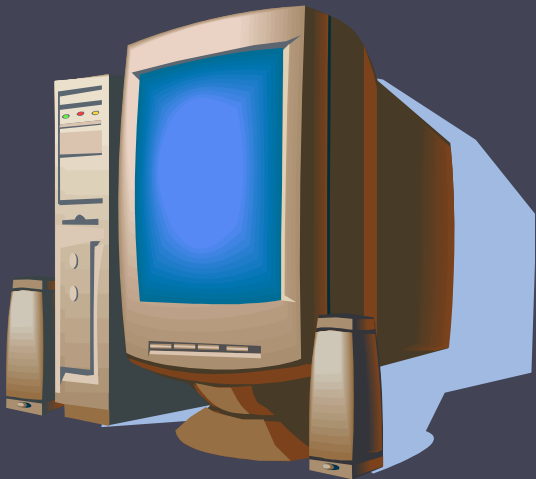


1. Computer Hardware
2. Computer Software



What is Computer Hardware?

- Computer Hardware is the physical part of the computer system, the machinery and equipment.
- Parts of the computer “you can see”



More Computer Hardware



Mouse: a small device, which you move across the top of the desk to move the pointer or cursor on the screen.



Printer: used to make a paper copy of the information into the computer.



Image Scanner: an electronic device that generates a digital representation of an image for data input to a computer

Computer Software?

- Computer Software are programs that tell the computer what to do.

Examples

- Microsoft Word-word processing program
- Microsoft PowerPoint-presentation program
- Microsoft Excel-work book program used to track, calculate, and analyze numeric data

Computer Input Devices

Computer Devices that input information in the computer

- Key Board
- Mouse
- Scanner
- Digital Camera
- Touch Pads
- Light pen
- Joystick
- Touch screen
- OMR (Optical Mark Reader)
- OCR (Optical Character Reader)
- MICR(Magnetic ink Character Recognition)

Computer Output Devices

- Computer Devices that output information from the computer.

- Monitor
- Printer
- Plotters
- Speaker
- Projector

