

FRANCE(MIDDLE AGES)

(11th to 15th Century) History

A new civilization was developing in Western Europe in the middle of 11th century.

Christianity had spread through out the north and east.

Romenesque art, a combination of the classic and Byzantine traditions flourished in France and Germany in 11th century.

By the 13th century strong national states were coming to the fore in France. This was the period of the introduction of Feudalism—the age of Chivalry.

In the feudal system the man who laboured on the lands of a master had to render him military service when necessary. Gradually feudal states gave way to towns and with growth of towns, there emerged the middle class.

The crusades from 11th to 13th century exposed Western Europeans to the magnificence of the Eastern culture and opened trade routes to the east. The crusaders brought back with them cotton calico, muslin, damask, satin, velvet and camel hair together with the methods of weaving them. These crusades exerted a marked influence on dress of this period.

11th Century

Costume

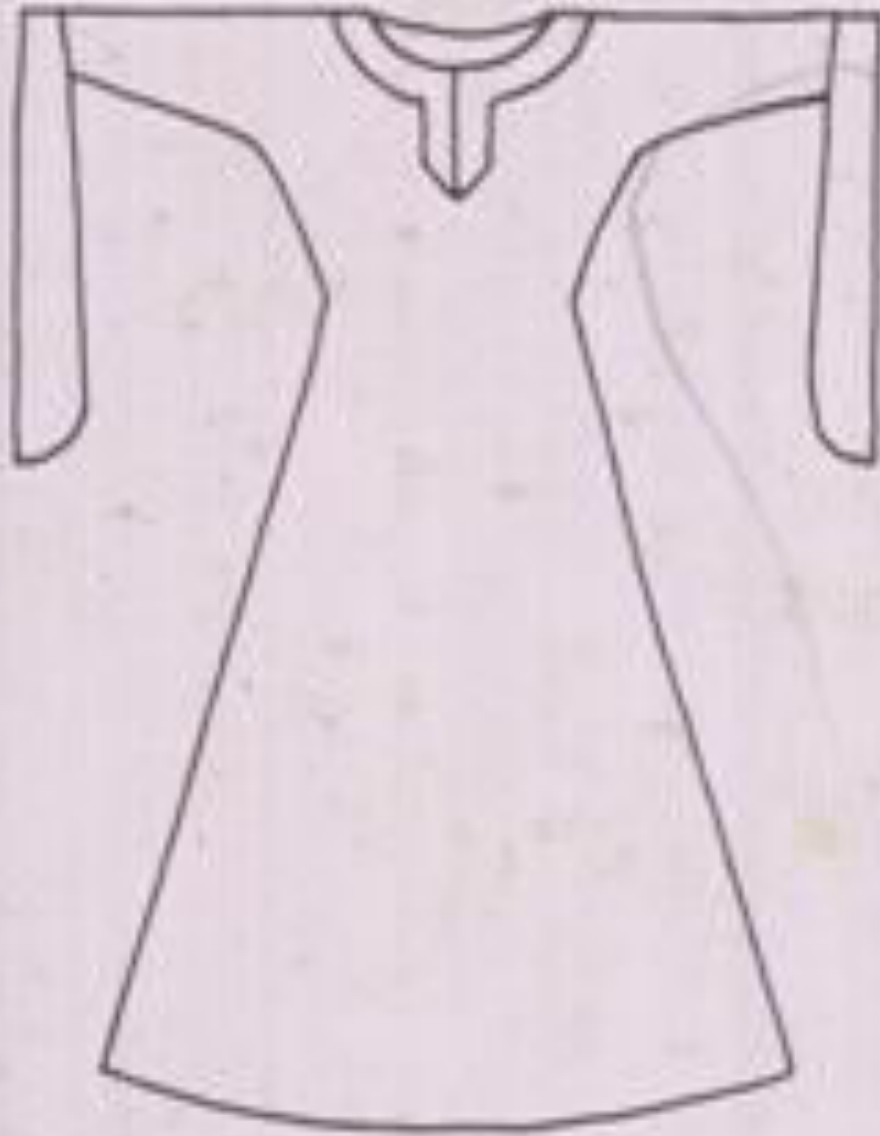
Bliaut—Men and women both adopted Bliaut which was a long straight garment with large loose kimono sleeves. This had fullness in the skirt added by gored sections at the sides.

A white Tunic in linen was worn under the bliaut. Men wore armor and the women- a corset laced up at the back.

An embroidered girdle was wound twice around the hips and fastened low in front with long hanging ends. To this was attached a richly embroidered purse.



**BLIAUT
WITH KIMONO SLEEVES
AND DEEP NECK
SHOWING TUNIC
UNDERNEATH**



BLIAUT



**AN
EMBROIDERED
GIRDLE WAS
WOUND TWICE
AROUND THE
HIPS AND
FASTENED LOW
IN FRONT WITH
LONG HANGING
ENDS.**

A long mantle was worn and was fastened on the left shoulder.

Shoes were pointed, women wore soft shoes buttoned up in front.

Hair: Hair was braided with ribbons. False hair was used. Loose hair for young women hair were kept flowing and partially concealed by a small circular veil. Women of rank wore crown.

Jewelery: Rings, bracelets, brooch were used. No head ornaments.

No make up was used.

12th Century.

Simple and severe costumes were only temporary. The people soon began to compete with each other in imitating the rich nobles and great attention was given to dress by both men & women. French taste in dress soon became finer and more artistic.

Costumes were the same as worn during the crusades. The Bliaut became more fitted. Men wore hoods attached to small capes.

Particoloured bliaut was worn.

Changes took place in women's costumes. They wore a closely fitted bodice to highlight the lines of the figure. The bodices were laced down the back or under the arm and was attached to the skirt at hipline. Two belts were worn: one at the normal waistline and the second over the joining of bodice and skirt with ends falling loose.

Neck of the bodice was left slightly open to show the undergarment.

Sleeves were sometimes wide at the top, narrow, closefitting and fastened at the wrist.

Others were narrow at the top and wide at the middle of the forearm, falling almost to the ground.

The most extreme of these were knotted to keep them from trailing to the ground.



**CLOSELY
FITTED
BODICE
WITH
LACING
AT THE
BACK AND
UNDERARMS**



OTHERS WERE
NARROW AT THE
TOP AND WIDE AT
THE MIDDLE OF THE
FOREARM,
FALLING ALMOST
TO THE GROUND.





THE MOST
EXTREME OF
THESE WERE
KNOTTED TO
KEEP THEM
FROM
TRAILING TO
THE GROUND.

Jewelry:- Rings and collars of pearls. Pins and diadems were popular among the noble ladies.

Hair dressing:- Hair dressing began in this century.

Rolls of hair, sometimes plaited were arranged at the sides of the head, over the ears and confined by a net.

These nets were of gold threads and were kept in place by bands or coronets of gold and jewels.

The veil became smaller.

VEIL BECAME SMALLER



Men started keeping beard.

At first it was full beard and then only a pointed beard covering the chin and finally moustaches joined the chin beard.

By the end of the century, all chins were shaved leaving only the moustache.

